

The background features a large white circle in the center, partially overlapping a light blue area on the left and a light pink area on the right. A dark blue shape is at the bottom, also overlapping the white circle. The text is centered within the white circle.

DNL AMALGAMATION INFORMATION

AGENDA

Introduction

Primary goals

The Why

Pros and Cons

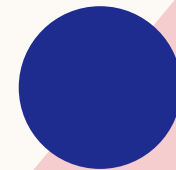
Structure

Registration Numbers and Cost

Additional Items

Summary

Q & A Session





PHILOSOPHY

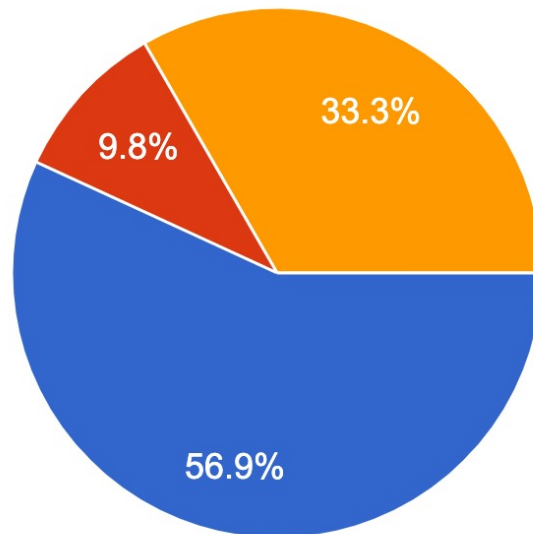
The philosophy of our minor sport organization is centered around:

- Fostering and cultivating a passion for amateur minor hockey among the youth in our geographic jurisdiction.
- Creating an inclusive space for eligible individuals to engage in recreational ice hockey, offering community-driven programs that emphasize enjoyment, physical activity, and fair competition.
- Nurturing talent and facilitating participation in competitive ice hockey, enabling our players to reach their highest potential within the association.
- Ensuring the vitality of Local League programs in all three original hockey associations.
- Organizing hockey games, tournaments, and providing developmental opportunities for our players within the DNLMHA.
- Instilling values of good sportsmanship, respectful conduct on and off the ice, reverence for authority, teamwork, and fostering a lifelong passion for and involvement in the game of hockey among all players, coaches, managers, and association members.

DDMHA SURVEY RESULTS

- Survey was sent out to the membership on Sept 13, 2023
- We had a 40% membership response
- Because of those responses, this is why we have taken the direction that we have

I would like Delhi to explore what a partnership/amalgamation could possibly look like with Langton and Norwich



- Yes
- No
- I am indifferent and trust that our executive will do what's best for our membership and the future of the organization

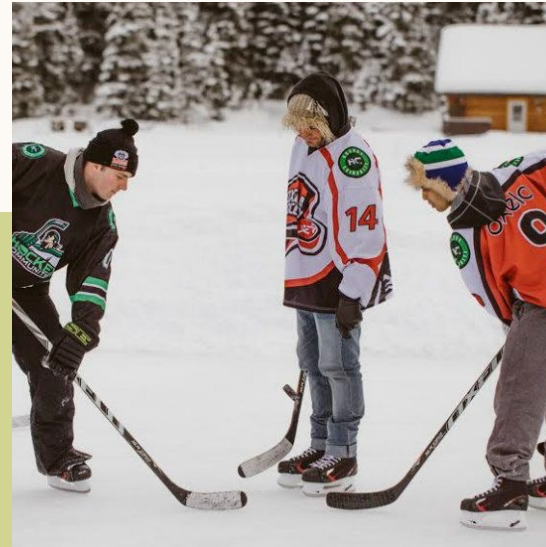
PRIMARY GOALS



**PLAYER
DEVELOPMENT**



FUN



**SENSE OF
COMMUNITY**



**KEEPING HOCKEY
AFFORDABLE**

THE WHY



PROVIDE A MORE COMPLETE AND SUSTAINABLE HOCKEY PROGRAM

- Allows us for the possibility of providing more second entry teams
- Allows players to play with like skilled players leading to player enjoyment
- Select teams would also be able to take from all players underneath the new banner



ACCESS TO 3 ICE PADS

- Leads to better ice times for all teams
- Allows for Representative teams to increase to 2 practices a week



LL PLAYERS AND TEAM NAMES REMAIN

- Under the new banner, the LL will remain with the same names and players will be playing where they want to play.
- LL will play out of their traditional home rink

THE WHY



AFFORDABILITY

- Every member will be under the same banner therefore all will be sharing costs
- Registration costs will remain low within our control



SUSTAIN COMMUNITY AND SMALL TOWN HOCKEY

- Our communities align very well
- Students attend school together, especially at the high school age.



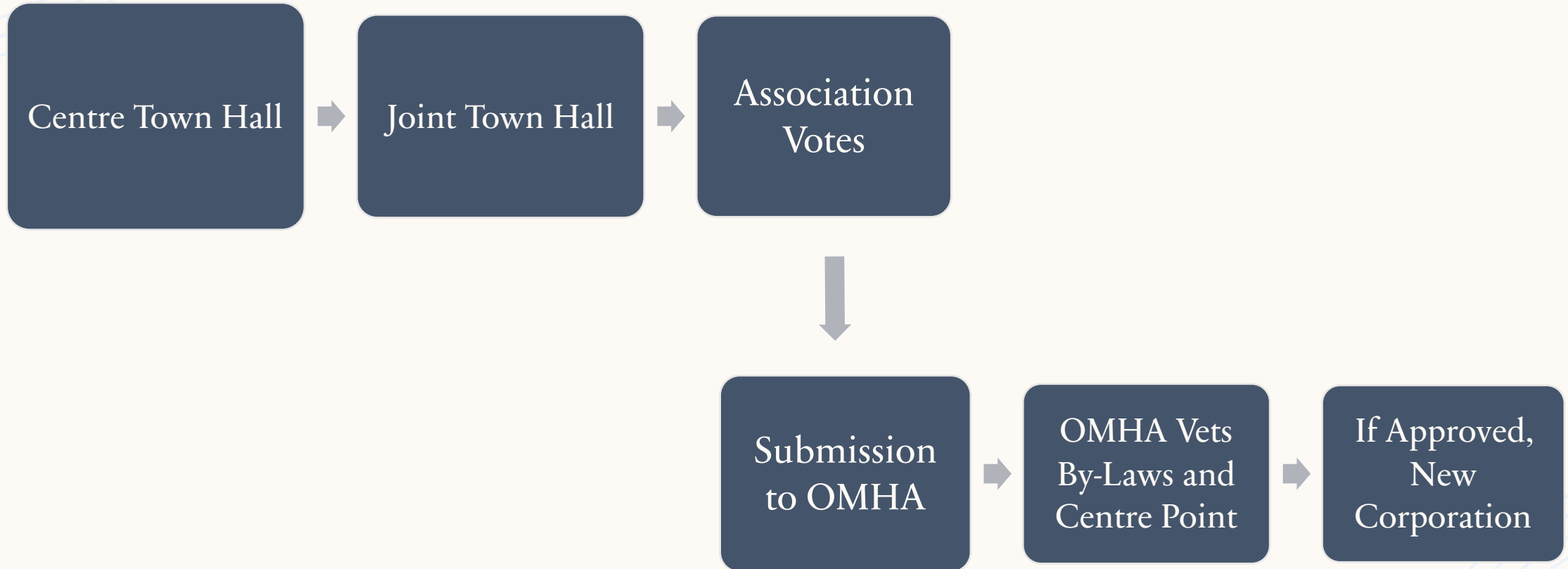
INCREASED POOL OF VOLUNTEERS

- Many hands make light work
- Increased pool of Coaches

DEVELOPMENT

- Offered as an individual choice
- We understand and appreciate that everyone does not want to do extra development. That is why we are choosing to provide the opportunity for those wanting to, but not sharing the costs with those that do not.
- Examples would be
 - Power Skating
 - Skills and Drills
 - 3 on 3 Summer League (raises \$15-20000 each year)

HOW WE GET THERE



The New Season

Representative

Fall Tryouts will remain

We will offer “B” and aim to offer “C” in every division

Southern Counties is the league we will continue to play in

LL

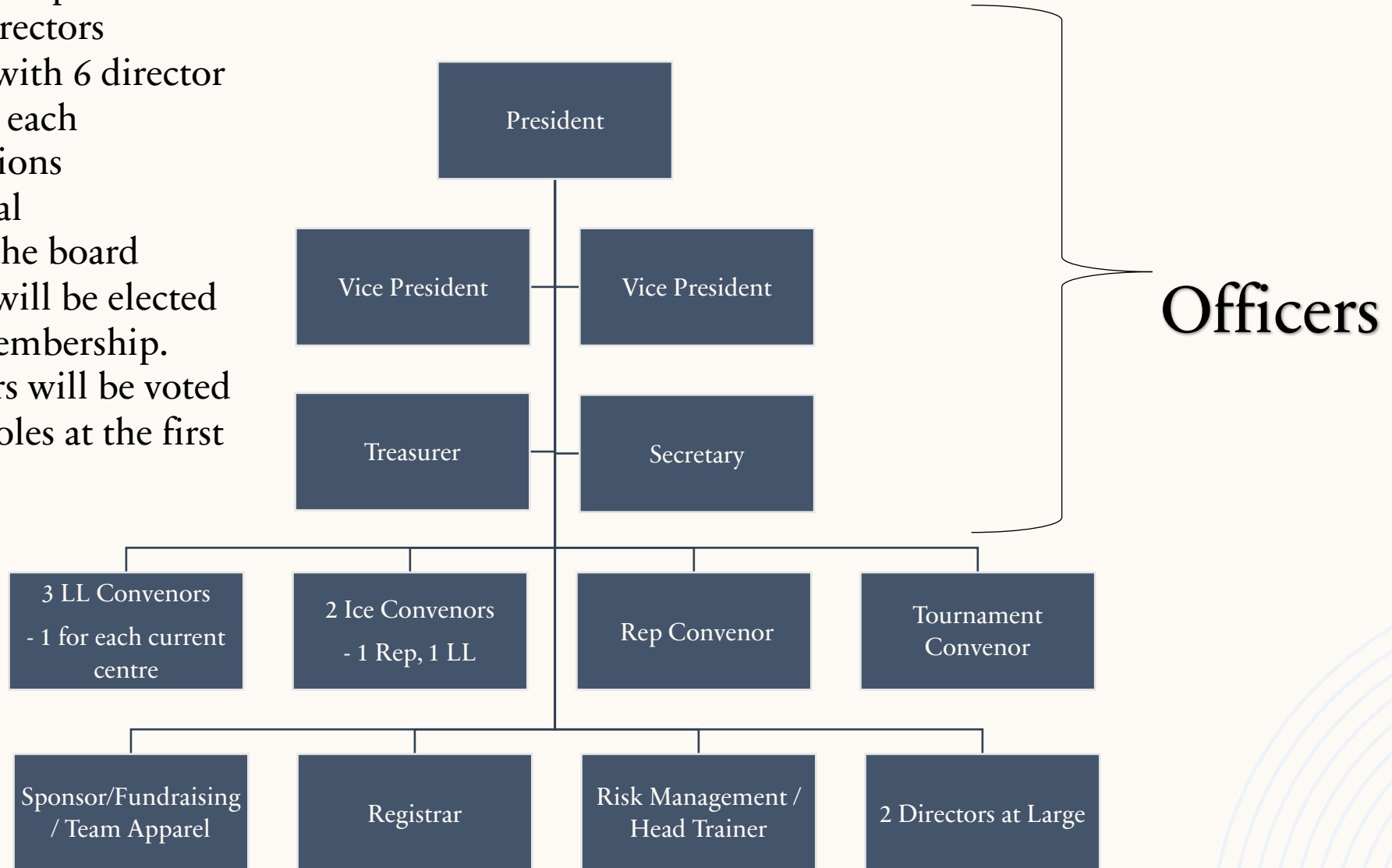
Will operate under the New Corporation

BUT, will maintain their current names and logos

WILL play at their current home rinks based on player request

Proposed Executive Roles

- We would be able to operate with a range of 12-18 Directors
- Ideal would be 18 with 6 director spots coming from each traditional associations
- We would like equal representation on the board
- Officers/Directors will be elected positions by the membership. Additional directors will be voted in and appointed roles at the first meeting



Executive

- Each position would be a director and have a vote on the executive
- It would be strongly encouraged for directors to form committees to help with the workload. Some may not require a committee.
- An example of this would be the Tournament Convenors – they would seek volunteers to help with the organization and running of the tournament, these individuals would be part of the committee but would not have voting rights at the executive level

What is a 3.5?

- These are players who are playing Rep hockey in our organization because their home organization could not field a team at that Level
- They must then try out at the next closest centre if they would like the opportunity to play Rep Hockey
- These players all tried out with equal opportunity in Delhi and were successful in making the teams

CURRENT REGISTRATION NUMBERS

	DELHI	NORWICH	LANGTON	DNL	
U5	31	22	15	85	U7
U6	17				131
U7	23				
U8	21	12	18	39	U9
U9			12	24	95
U9 MD	10		11	32	
U11	15 (2)	13	17	47	U11
U11 Rep	13 (1)	13		27	90
U11 "D"	14 (2)			16	
U13	31 (2)	14	15	60	U13
U13 Rep	14 (2)	13		29	89
U15	25 (2)	16		43	U15
U15 Rep	15 (1)			16	59
U18	38 (2)	19		57	U18
U18 Rep	15 (2)			17	74
U21	14 (2)			16	16
3.5 in Delhi		9	10		

- Important to note
 - Norwich does not charge a rep fee.
 - All local league and Rep receive the same amount of ice time (age dependent)

CURRENT REGISTRATION COSTS

DELHI

NORWICH

LANGTON

	DELHI	NORWICH	LANGTON
U5	\$310	\$325	\$650
U6	\$310	\$325	\$650
U7	\$535	\$325	\$650
U8	\$535	\$600	\$650
U9	\$590	\$600	\$650
U11	\$590	\$675	\$650
U13	\$590	\$675	\$650
U15	\$625	\$850 (1.5hr)	\$650
U18	\$625	\$850 (1.5hr)	\$650
U21	\$550	N/A	N/A
Rep	U9 - \$100, U11 - \$130, U13 – U18 - \$150	N/A	N/A
Goalies	Discount of \$150	\$350	\$650

PROS AND CONS

STAYING AS IS

Pros

- Provides a local place to play representative hockey
- Receive 3.5 from Langton and possibly Norwich
- Rep system stays in Delhi, Home games stay in Delhi
- U13 and above Players in our organization have more choice of either going to South Oxford, Norfolk, Woodstock or Brantford if they are wanting to play “A” or above classification hockey.

If players do choose to leave and make their respective programs, that will open up spots for other players to play representative hockey in their hometown

Cons

- Inconsistent quality of representative teams
- Rely heavily upon 3.5's for our Representative teams. Currently **19** 3.5 players on our current teams
- Players wanting to play “A” or above need to compete for one of the 3 NRP spots that are available
- Ice availability is getting limited, especially favourable ice times

PROS AND CONS

Pros

- The goal is to offer “B” and “C” level teams ensuring players are playing where they should be
- Provide even more complete programming
- Fees stay low and affordable
- Players still have the option to play “A” or above level hockey
- Access to more favourable Ice times, LL especially in their home rinks
- Increase in ice for Rep teams (increase in cost)
- LL Team names will stay and will play in their traditional home centres
- Successful LL programming continues
- Consistent talent pools for each level, from Rep to LL
- On top of representative teams, select would also be an option being able to pull from 3 different LL areas
- Larger Tournaments having access to 3 ice rinks
- Our organizations control the narrative, board structure, programming, costs, etc.
- Increased volunteer pool and sponsorship opportunities
- “Dust off your skates” can start earlier with Norwich Summer ice and allow for opportunity to create both rep and LL teams sooner
- Increase pool of volunteer coaches

JOINING

Cons

- Home games for Rep could be in any of the 3 rinks. No longer just your home rink. Would lead to more travel
- Increased talent pool meaning increase competition for Rep and select teams
- Loss of traditional home centre Rep Program and Rep Program Name
- Loss of Independent local league control under the current structure (Names and traditional arenas in which members are accustomed to playing in will still remain)
- Will still lose players to NRP

The Hockey Cascade

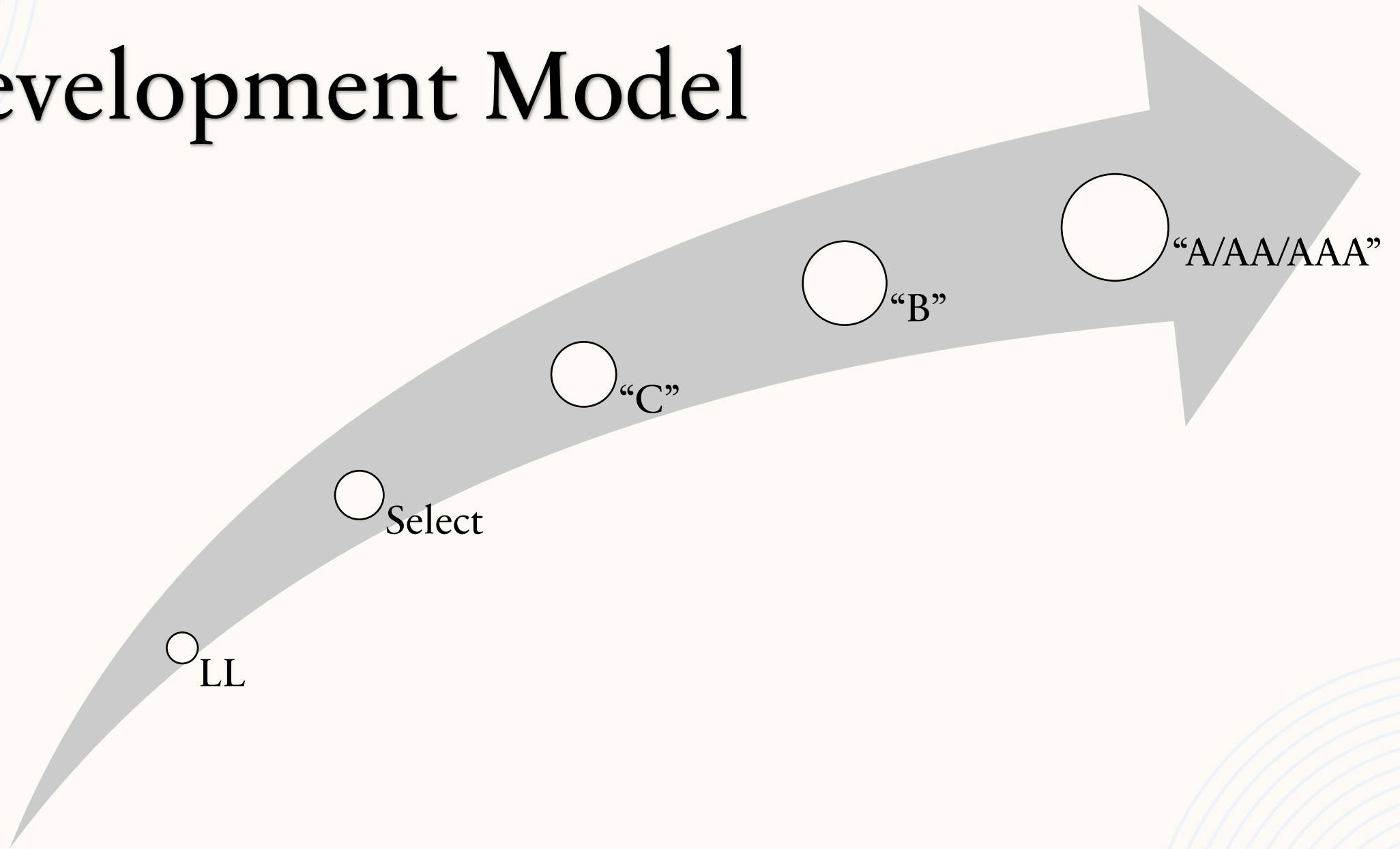
of Amalgamation

- Currently offer a competitive LL program
- With amalgamation, it can mean that more players will be playing at the appropriate level they should be
- Example:
 - We have 3 rep teams across the three centres this year in U11 (Delhi – “C” and “D”, Norwich “D”
 - With amalgamation, this number goes down to 2 – “B” and a “C” with the remaining players remaining with their traditional LL centre if they so choose
 - BUT, with the increased pool (being able to draw from all 3 centres) – Select would be a viable option to provide to those players who were on the “bubble” of those teams while also playing for their LL teams therefore in theory making LL stronger along with our Rep Program.
 - This creates greater opportunities for improvement and expanding the capability of players at the Local Level
- Having access to 3 arenas allows us to have access to the Ice needed to run these teams.

SELECT

- Comprised of players selected from an organizations LL program (not Residentially Restricted)
- They may compete in up to 3 exhibition games per month and up to 3 tournaments in a season. Practices would be available as well (additional cost)
- You may be on the select team as well as “AP” for a Rep Team. It does not restrict you from being a possible AP

Development Model



WHAT'S THE DIFFERENCE

Amalgamate

- Two or more active Ontario Not-for-Profit Corporations amalgamate to become one new Ontario Not-for-Profit Corporation.

Reorganization

- **Norfolk, South Oxford are examples**
- This involves two or more active Ontario Not-for-Profit Corporations that wish to incorporate a new Not-for-Profit Corporation that will jointly administer Representative Hockey for two or more active Not-for-Profit Corporations who will continue to offer and administer their own Recreational programming (House League & Local League).

WHY AMALGAMATE VS REORGANIZE

Amalgamate

- Working together as one organization for all kids
- Not working with multiple corporations below having differing goals
- Able to keep costs down and hockey as affordable as we can
- Accessibility to all 3 rinks at a reduced “Minor Hockey Rate”
- Costs shared amongst the whole organization to help keep fees down for everyone

Reorganization

- Costs are divided
 - No longer all sharing costs among everyone (see next slide)
- Will see an increase LL and a large increase in rep costs
- Will not get Minor Hockey rate in Norwich. Only with Amalgamation.
- Three LL organizations are no longer recognized by the HCR. Only the Rep organization is.

Costs with Reorganization Example

- In the traditional structure of an organization, it's typically divided with a 70-30 split, with 70% representing the LL (Larger Group) and 30% as the Rep (Smaller Group). Costs are distributed among the entire organization.
- However, with the reorganization, the 30% group is now separated from the 70%. Each group is now responsible for its own costs, which were previously shared across the entire organization. As a result, the 30% group will experience a significant increase in their costs, as observed in neighboring reorganized centers, essentially functioning as standalone entities.
- The 70% group won't be impacted as severely, but they will still see an increase in costs because the 30% group, which used to help share the expenses of the traditional organization, has been separated.

OMHA – Category Review Committee

The mandate of this committee is not to specifically look at re-categorization of Associations, but also to place Associations in a category to promote fair competition. In order to do this the Committee met several times to discuss and review the categories of every OMHA Association. The committee was always mindful that the categorization of an Association is, at best, a very inaccurate science and considered each Association's registration numbers, caliber of play during the regular season, NRP regulations and the effect on those Associations, their OMHA Playdown successes over the past five years, the number of players that an Association traditionally lost to AAA Zone teams and as well considered the recommendation of the Regional Director.

OMHA – Category Review Committee

Establish the critical path for the next category review.

In establishing the critical path for the next category review it should be noted that the current report was initially due to be presented at the 2021 AGM for implementation in the 2022-23 season. Due to the pandemic and its impact on our sport it was decided to delay the filing of this report by a year. However, it is recommended that the next Category Review will begin in accordance with every five years timeline established in 2010.

NEXT
REVIEW

- 2025-2026 the Ad-hoc Committee begins work with report for 2026 AGM
- 2026-2027 Association appeals
- 2027-2028 to take effect

Committee Movement Rationale:

- The Association's participant registration. Each category was aligned into an approximate high and low registration range.
- The Association's past OMHA Playdown and league overall records and/or successes and taking into account the impact of the new OMHA Championships structure and the ability to move individual teams according to their level of competitiveness.
- The realignment of base categories as a result of the integration of 'AE' programming into the established categories.
- The OMHA Regional Member's opinion of the Associations from their Area.

OMHA – CATEGORY REVIEW COMMITTEE

- Important to note that not only were teams being moved up in category, but also moved down to create leagues with fair competition

ASSOCIATION	REGION	CATEGORY (AS OF 2022-23)	NEW CATEGORY (EFFECTIVE 2023-24)
Arthur	3	D	LL
Dorchester	1	B	A
Dresden	1	D	C
Essa	5	D	C
Frontenac	6	C	B
Howick	WOAA	D	LL
Huron-Bruce	WOAA	D	C
Ilderton	1	C	B
Lakefield	6	C	D
Lambton Shores	1	C	B
Langton	2	D	LL
Manvers	6	D	LL
Mount Brydges	1	B	A
Parry Sound	5	B	C
Port Colborne	2	B	C
Seaforth	WOAA	C	D
South Huron	1	C	B
Southpoint	1	A	B
St. Marys	1	B	A
Strathroy	1	B	A
Tecumseh-Shoreline	1	AA	A
Tillsonburg	2	B	A
West Lorne	1	D	LL

EXAMPLES OF AMALGAMATED CENTRES THAT DID NOT GO TO “A”

- There are currently **97** “B” and below centres in OMHA
 - Compared to **24** “A” centres.
 - These are centres that we traditionally come across in Silver Sticks, Tournaments and OMHA Tournaments
 - This is not a complete list by any means
- **Arran Elderslie** - Tara, Paisley, and Chesley Blyth Brussels - Blyth and Brussels
 - **Bruce Peninsula** - Lion's Head and Wiarton
 - **Central Perth** - Elma Logan and Milverton
 - **Huron Bruce** - Ripley and Lucknow
 - **Mid Huron** - Seaforth joined with BCH which included Bayfield, Clinton, and Hensall
 - **Minto** - Palmerston, Harriston, and Clifford
 - **Saugeen Shores** - Port Elgin and Southampton
 - **South Bruce** - Mildmay and Teeswater
 - **TCDMHA** - Chatsworth, Keady, and Desboro
 - **West Grey** - Durham, Normanby (Ayton)
 - **Saugeen Valley** – Hanover and West Grey (happened just last year)

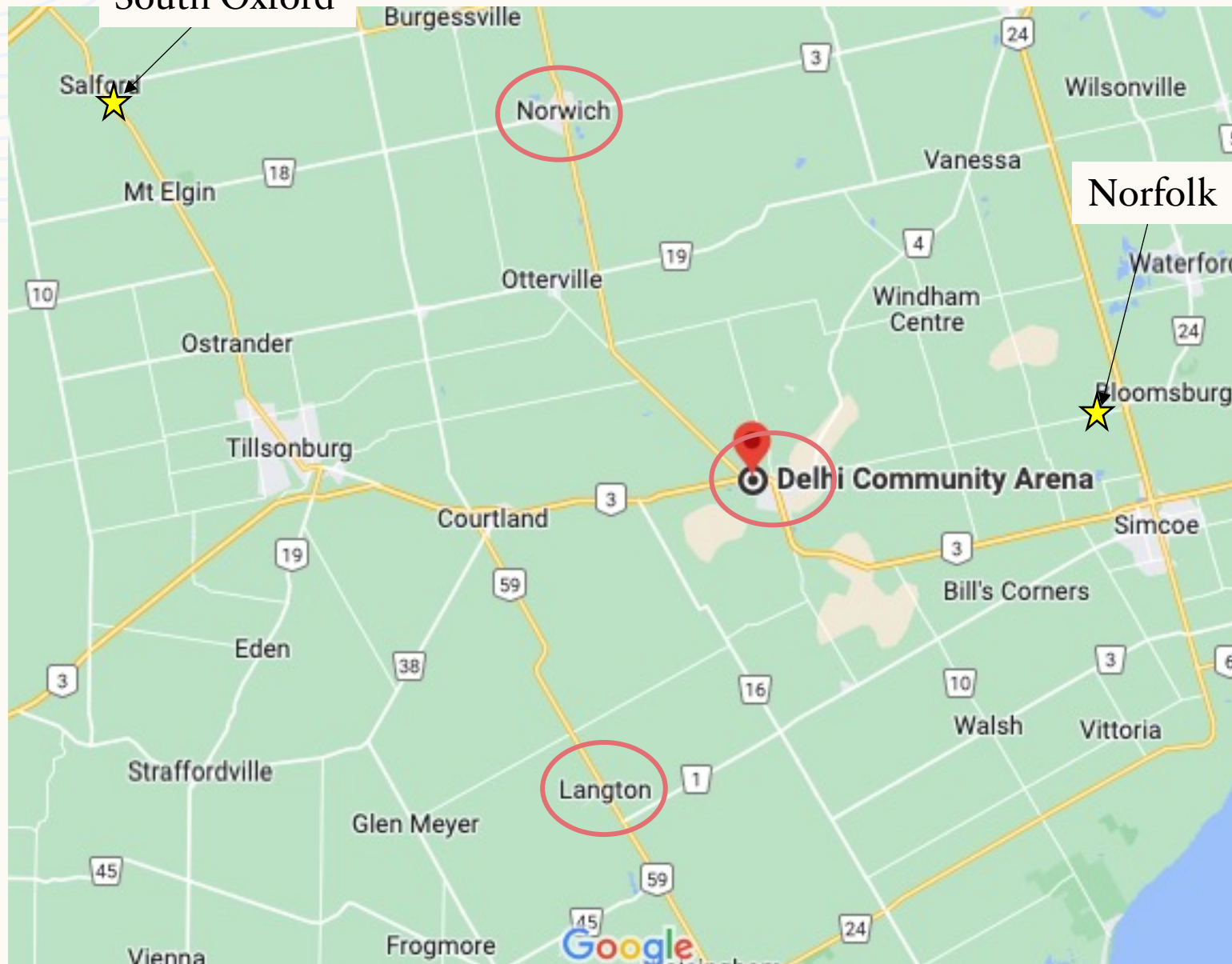
Additional Items

- The new jerseys for the organization would be purchased by the New Organization through sponsorship – we do not believe this should be a cost offloaded onto the player
- The current jerseys from each organization would now be used for the LL teams and the regular upkeep and purchasing of these jerseys.
- We plan to seek out a supplier that would be able to offer organization specific gear including pants, gloves and other additional items. This would by no means be a requirement, but just an option for those looking to purchase.

Ice Challenges

- Our association is currently in good health, but due to the expected growth in Delhi and the inclusion of players from surrounding centers, we anticipate a shortage of ice time for our members. To address this issue and ensure access to additional arena time, we are considering an amalgamation. Without securing external ice time and implementing an amalgamation, there's no assurance that local league, select, and rep teams will have their games in Delhi. However, with an amalgamation, it will give us a greater opportunity to be able to make sure that local league teams will continue to have access to their home arenas for all practices and games.
- Additionally, we are planning to relocate our Rep program from using just one ice rink for home games and the majority of practices. Instead, we will distribute these activities across three centers. This strategic move will result in more available ice time for our Local League teams at their traditional home rinks, further ensuring that they can continue their practices and games as usual.
- Currently we have 40.5 hours allotted to us at our home rink. We currently need 42 hours to meet the need of our organization, and this is without having a U9 LL team this year and does not include what a U13 select team may require. We are already using external ice from Delhi.
- If we were running these teams, we would require 45 hrs plus to run the program. This ice is simply not available in our home rink.
- If we have an influx of players, from both development in Delhi and our surrounding areas, LL and Rep will have to be looking at using ice at neighbouring arenas for games and practices.

CENTRE POINT



- Delhi Arena
- Reasoning
 - Choose to go with Centre point compared to Hard Boundaries as we feel negotiations with neighbouring centres would be time consuming and not necessarily applicable to our needs

FINANCES

- Each Association must contribute to fund the new corporation for initial operating costs
- Recognizing that registration fees **DO NOT** cover the fees of hockey, we do rely upon fundraising and sponsorships to keep our costs down.
- We have the goal of keeping hockey affordable for our communities

THANK YOU

QUESTIONS AND ANSWER PERIOD

- **This is a public discussion, not a debate.** The purpose is *not* to win an argument, but to hear many points of view and explore many options and solutions.
- **Everyone is encouraged to participate.** You may be asked to share what you think, or we may ask for comments from those who haven't spoken. It is always OK to "pass" when you are asked to share a comment.
- **No one or two individuals should dominate a discussion.** If you have already voiced your ideas, let others have an opportunity. When you speak, be brief and to the point.
- **When you speak, state your name and where you live.** In a public meeting, it is helpful to know who is speaking as well as where they live in the community.
- **One person speaks at a time.** Refrain from side conversations. Pay attention to the person speaking. If you think you will forget an idea that comes to mind, write it down.
- **Listen to and respect other points of view.**
- **Do your best to understand the pros and cons of every option,** not just those you prefer. Be as objective and fair-minded as you can be.
- **Seek first to understand, not to be understood.** Ask questions to seek clarification when you don't understand the meaning of someone's comments.

